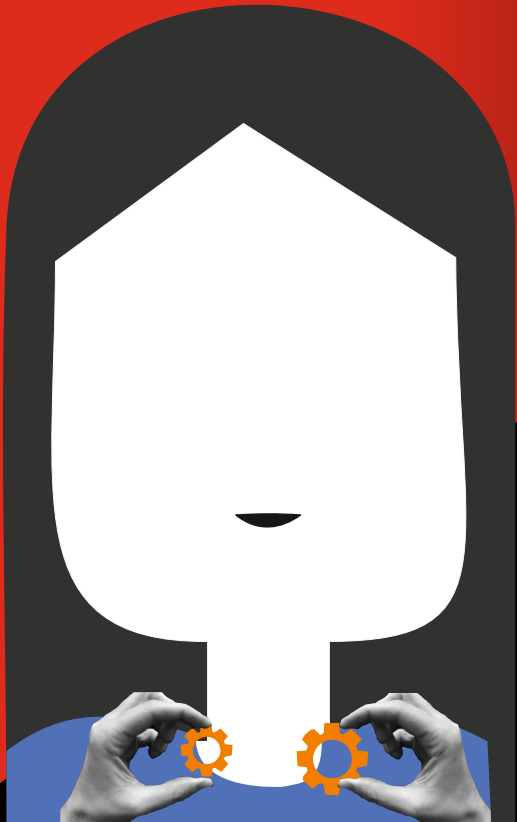


SUPERLAB (INDIA)



ABOUT US **SUPERLAB INDIA**

Combining innovative and latest technology, **SUPERLAB (INDIA)** has emerged as one of the leading manufacturers and exporters of high quality Textile Testing Equipments. We also provide value added support services like lab layout, calibration testing, procedures/standards, recording techniques and operation of Textile Equipments.

We work with a strong commitment maintaining integrity throughout the business process meeting all the individual requirements of the clients. Our well equipped infrastructure and motivated team of professionals have been the key to success in the International Market. We follow stringent quality norms throughout the production process to ensure high products performance that complies with International Quality Standards.

We also conduct extensive Research & Development programmed to design and develop testing machines that can address the future needs of the Textile Industry.

PRODUCT

Our wide range of testing machines is applied for many kinds of materials test including high polymer material and fabric in textile industry. These machines are designed to provide highest level of accuracy along with the ease of operation. The broad range of Textile Testing Machinery we offered the following:

- Fabric Testing Equipments
- Lab Dyeing Equipments
- Consumable for Laboratory
- Yarn Testing Equipments
- Textile/Finishing Equipments
- Dyeing Machines
- Color Fastness Equipments
- Chemical Testing Equipments
- Other Equipments

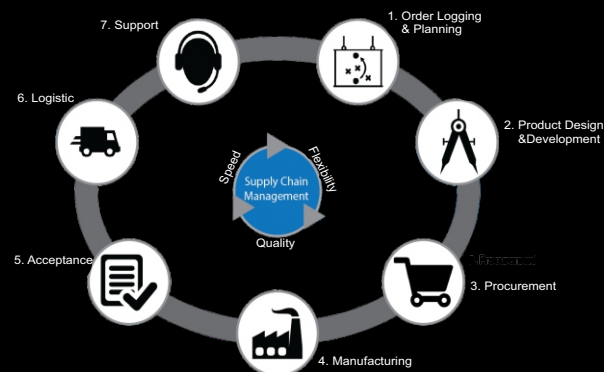


QUALITY

We lay a strong emphasis on quality of product as well as services. A comprehensive quality management system is strictly followed right from the procurement of the raw material till the final dispatch of the products. The complete production process is carried under the adept supervision of senior quality control professionals. All our products are tested on variety of parameters in our well equipped laboratories to ensure highest level of precision and international standards of quality.

INFRASTRUCTURE

Located at New Delhi, our state-of-the-art infrastructure is equipped with all the requisite facilities to fulfill the varying demands of the International Customers. We have latest manufacturing machinery which provides flexibility in production along with consistent quality. Further, our team of highly experienced professional's works in close coordination with the clients to understand their specific requirements and offer them best solutions.



RESEARCH & DEVELOPMENT

Our R&D department has given us a competitive edge in the market by developing innovative range of user-friendly testing machines. The team of highly experienced researcher keeps track of latest technological advancements taking place at both the operations as well as product level. And accordingly upgrade the existing technology to meet the future Testing requirements of the Textile Industry.



STRENGTH

Some of the factors that have placed us high on the Pedestal of success in the Competitive Global Market are:

- International Standard Quality
- Customer Focused Approach
- Highly Focused Research and Development
- Customization
- Competitive Pricing
- Timely Delivery

Esteemed Clients

Our pursuit of perfection in all the spheres of businesses has fuelled the rapid growth of the company and its acceptance worldwide. We have successfully garnered the trust and goodwill of the most reputed clients from both Govt. & Private Sectors. We believe in maintaining an ever-lasting relationship with our clients by offering them maximum benefits through best quality of products and services.



01

Fabric Testing Equipments

S.No.	Code No.	Product Name	P. No.
01	FT01A	Color Matching Cabinet	07
02	FT02A	Button Snap Pull Tester	07
03	FT03A	Tearing Strength Tester	07
04	FT04A	Martindale Abrasion Cum Pilling Tester	07
05	FT05A	ICI Pilling Tester	08
06	FT06A	GSM Cutter (Without Pad)	08
07	FT06B	GSM Round Cutter (With Pad)	08
08	FT07A	GSM Scale	08
09	FT08A	Tensile Strength Tester(Digital)	09
10	FT08B	Tensile Strength Tester(Computerized)	09
11	FT09A	Traverse Thread Counter	09
12	FT10A	Conditioning Chamber	09
13	FT11A	Hot Air Oven	10
14	FT12A	Bursting Strength Tester(Analog)	10
15	FT12B	Bursting Strength Tester(Digital)	10
16	FT13A	Shrinkage Template	10
17	FT14A	Spray Tester	11
18	FT15A	Stiffness Tester	11
19	FT16A	Crease Recovery Tester	11
20	FT17A	Beasley Balance	11
21	FT18A	Wrinkle Recovery Tester	12
22	FT19A	Drape Meter	12
23	FT20A	Flammability Tester(Horizontal)	12
24	FT21A	Bundesmann Tester	12
25	FT22A	Projection Microscope	13
26	FT23A	Air Permeability Tester	13
27	FT24A	Fabric Inspection Machine (Non Woven Fabric)	13
28	FT24B	Fabric Inspection Cum Rolling Machine Fabric	14
29	FT24C	Inspection Machine For Open Width Lycra Knitted Fabric	14

02

Color Fastness Equipments

S.No.	Code No.	Product Name	P. No.
01	CF01A	Crock Meter(Manual)	15
02	CF01B	Crock Meter(Motorised)	15
03	CF02A	Washing Fastness Tester	15
04	CF03A	Exposure Rack	15
05	CF04A	Light Fastness Tester (MBTL)	16

06	CF05A	Light Fastness Tester(Zenon Arc)	16
07	CF06A	Prespirometer	16
08	CF07A	Sublimation Fastness Tester	16

03

Lab Dyeing Equipments

S.No.	Code No.	Product Name	P. No.
01	LD01A	HTHP Beaker Dyeing Machine	17
02	LD02A	I.R Beaker Dyeing Machine	17
03	LD03A	Rota Dyer Machine	17
04	LD04A	Laboratory Padding Mangle	18
05	LD05A	Water Bath (Doubled Walled)	18
06	LD06A	Lab Winch Dyeing Machine	18
07	LD07A	Atmospheric Pressure Beaker Dyeing Machine	18

04

Yarn Testing Equipments

S.No.	Code No.	Product Name	P. No.
01	YT01A	Twist Tester (Manual)	19
02	YT01B	Twist Tester(Motorized)	19
03	YT02A	Wrap Reel (Manual)	19
04	YT02B	Wrap Reel (Motorized)	19
05	YT03A	Yarn Appearance Board Winder	20
06	YT04A	Fiber Fineness	20
07	YT05A	Yarn Tension Meter	20
08	YT06A	Shade Card Winding Machine	20
09	YT07A	Package Hardness Tester	21
10	YT08A	Stroboscope	21
11	YT09A	Yarn Tensile Strength Testing	21
12	YT10A	Lea Strength Tester	21

05

Chemical Testing Equipments

S.No.	Code No.	Product Name	P. No.
01	CT01A	Salt Spray Tester	22
02	CT02A	BOD Incubator	22
03	CT03A	Digital Photo Calorimeter	22

04	CT04A	UV-VS Spectrophotometer	22
05	CT05A	Melt Flow Index Tester	23
06	CT06A	Muffle Furnace	23
07	CT07A	Orbital Shaker	23
08	CT08A	Magnetic Stirrer	23
09	CT09A	Moisture Balance	24
10	CT10A	TDS Meter	24
11	CT11A	Water Distillation	24
12	CT12A	pH Meter	24

06

Textile/Finishing Equipments

S.No.	Code No.	Product Name	P. No.
01	FM01A	Calendering Machine	25
02	FM02A	Boiler	25
03	FM03A	Washing Machine	25
04	FM04A	Tumbler Dryer	26
05	FM05A	Vaccum Iron Table	26
06	FM06A	Hydro Extractor	26

07

Dyeing Machine

S.No.	Code No.	Product Name	P. No.
01	DM01A	Cabinet Dyeing Machine	27
02	DM02A	Jigger Dyeing Machine	27
03	DM03A	Package Dyeing Machine	28
04	DM04A	Winch Dyeing Machine	28
05	DM05A	VAT Dyeing Machine	28

08

Other Equipments

S.No.	Code No.	Product Name	P. No.
01	OE01A	Niddle Detector	29
02	OE02A	Swatch Cutter	29
03	OE03A	Box Compression Teaster	29

09

Consumables for Laboratory

S.No.	Code No.	Product Name	P. No.
01	CLO1A	Tide	30
02	CLO1B	Persil	30
03	CLO1C	SDC Detergent	30
04	CLO2A	SDC Multi fiber DWS	30
05	CLO2B	SDC Blue Wool	30
06	CLO2C	SDC Felt Pads	30
07	CLO2D	SDC Wool Abradent	30
08	CLO2E	Adjacent Cloth	30
09	CLO2F	Crocking Cloth	30
10	CLO2G	AATCC Multi fabric	30
11	CLO3A	SDC Grey Scale	30
12	CLO3B	AATCC Grey Scale	30
13	CLO4A	GSM Pad	30
14	CLO5A	GSM Blade	30
15	CLO6A	Magnifying Glass	30
16	CLO7A	Pick Glass	30
17	CLO8A	IR Thermometer	30
18	CLO8B	Thermometer	30
19	CLO9A	Hot plate	30
20	CL10A	IR Heater	30
21	CL10B	Heater	31
22	CL11A	Thickness Guage	31
23	CL12A	Techo Meter	31
24	CL13A	Lux Meter	31
25	CT10B	TDS Meter (Pen Type)	31
26	CL14A	Tex Marker	31
27	CL15A	Moisture Meter	31
28	CL15B	Moisture Meter	31
29	CL16A	SS Ball	31
30	CL17A	Densimeter	31
31	CL18A	Tube Light	31
32	CL19A	Hygrometer	31
33	CL20A	Pipette	31
34	CL21A	Beaker	31
35	CL22A	Glass Flask	31
36	CL23A	Burette	31
37	CL24A	Glass Test Tube	31
38	CL25A	Glass Test Tube Stand	31
39	CL26A	Dyes and Chemicals	31
40	CL27A	Ph Paper	31

Color Matching Cabinet

FEATURES

- Cabinet is made of MS with strict adherence to international standards.
- Supplied with major tube lights & bulbs for quick and accurate color assessment.
- Fitted with Electronic/ballasts for Instant start & power saving to safeguard the expensive & sensitive tube lights & bulbs
- No warm-up; No flick; No heat emission; Elapsed Time displaying of each light source.
- Energy saving; Efficient illumination.
- Compact; High quality with low price.
- Button Switches

SPECIFICATIONS

- Overall Dimensions of the Instrument : 710±10 (L) x 414±10 (W) x 628±10 (H) mm
- Overall Dimensions of the Viewing Cavity : 685±10 (L) x 408±10 (W) x 380±10 (H) mm
- Net Weight of the Instrument : 25.480 Kg.

LIGHT SOURCES

- Artificial Daylight Fluorescent Lamps (D-65).
- Tungsten Filament Lamps.
- Cool White Fluorescent Lamp (CWF).
- Triphosphor Fluorescent Lamp (TL-84).
- Ultra-Violet Black Lamp.
- TL-83.
- UL-35, U-30.
- INCA-"A".



Button Snap Pull Tester

FEATURES

- IMADA Push- Pull force gauge of 50 kgf.
- Vertical stand to hold the gauge with arrangement to change the position of gauge.
- Base which house the frame to grip the attachment.
- Button Pull Fixture - Connected with force gauge.

SPECIFICATIONS

- Force Rating : 0.01 to 50.00 kg
- Force Resolution : 0.01 Kg
- Force measurement accuracy : ±0.5% of FSD
- Minimum Crosshead stroke : 500 (approx)
- Crosshead displacement : Measurement Resolution 2 mm
- Grips : 3 Size Button Pull Strength, Neck Stretch
- Size & Weight : 12" x 12" x 30" & 30 Kg
- Suitable to grip buttons from : 5mm to 25 mm

Tearing Strength Tester

FEATURES

- The equipment effectively measures the tearing strength.
- It is user-friendly.
- It consists of anti-friction ball bearings.
- It has an adjustable knife.
- A set of calibrated check weights are also supplied.

SPECIFICATIONS

- Capacity : 1600 Gms, 3200 Gms, 6400 Gms
- Clamping surface of each Clamp : 35.5 mm (Length) x 15.5 mm (Width)
- Distance between clamps : 2.5 ± 0.25 mm
- Tearing Distance : 43 ± 1 mm
- Slit Size : 20 mm
- Scale reading : 0 to 100% of range
- Scale reading : 0 to 100% of range
- Calibration check weight : At 1600 Gms, At 3200 Gms, At 6400 Gms
- Overall Dimensions of Unit : 470(W) x 300(D) x 410(H) mm



Martindale Abrasion Cum Pilling Tester

FEATURES

- Effective speed ratio of outer pegs to inner pegs
- 4 specimen can be tested simultaneously.
- Maximum load (Corresponding to Pressure of 12KN/m²) : 790g
- Comprise of stainless steel balls.
- Acrylic Top Plate for safety.

SPECIFICATIONS

	ABRASION	PILLING
SCOPE:	Flat Woven, Knitted and Certain non-woven fabrics	Flat Woven, Knitted and Certain non-woven fabrics
No. of specimens	1-4	1-4
Exposed area of test specimen	6.45 cm ²	
Working pressure on specimen:	9 kPa apparel 12 kPa upholstery	3 kPa (ASTM D 4970) 9 kPa (BS 5690) 12 kPa (BS 5690)
Rotational speed of outer pegs:	47±2.5 r/min	47±2.5 r/min
Drive (speed) ratio of Outer pegs: inner pegs	60.5±0.5 mm	24.0 ±0.5 mm
Circumferential parallelism of sample holder to abrading tables:	±0.05 mm	±0.05 mm

ICI Pilling Tester

FEATURES

- Consists of two wooden cubical Boxes with inside surfaces lined with special standard cork sheet and outside surfaces beautifully laminated.
- Consists of geared motor which rotates the boxes about their central axis
- Pre-set Digital Counter stops the motor automatically after the desired number of revolutions
- Can be used for all types of fabric and weave patterns.
- Eliminates subjective assessment.
- More accurate. And User friendly.
- Adopted universal standard testing procedure.

SPECIFICATIONS

- Size of Wooden Boxes (Inside) : 235 x 235 x 235 mm
- Thickness of Cork Lining : 3.2 mm (As per standards)
- Speed of Rotation of Boxes : 30 r.p.m. for snagging & 60 r.p.m. for pilling
- Size of Test Specimen : 12.5 * 12.5 cm²
- Size of Rubber Tubes : f 32mm (OD) x f 25mm(ID) x 140mm(L) (16 Tubes)
- Motor : 1/8 H.P. Single Phase geared motor 220V AC
- Counter : 5 DIGITS DIGITAL Pre-Set type counter
- Overall Dimensions of the Unit : 813 (W) x 482 (D) x 508 (H) mm



GSM Round Cutter (Without Pad)

FEATURES

- Reliable rapid, and easy to use.
- Depth of cutting up to 5mm.
- Special finishes for contacting surfaces to avoid of specimen slippage.

SPECIFICATIONS

- Diameter : 112.8 m
- Area of Sample Cut : 100 Cm²
- Sample Cut : Up to 500 GSM
- Solid Body Design
- GSM Pad and Blade not required
- Weight of Machine : 10.2 Kg.

GSM Round Cutter (With Pad)

FEATURES

- Reliable rapid, and easy to use.
- Depth of cutting up to 5mm.
- Special finishes for contacting surfaces to avoid of specimen slippage.

SPECIFICATIONS

- Diameter : 112.8 m
- Area of Sample Cut : 100 Cm²
- Sample Cut : Up to 500 GSM
- Solid Body Design
- Weight of Machine : 2.5 Kg.



GSM Scale

FEATURES

- Effectively measures GSM of fabric and other products like yarn and garment.
- A tool is offered to cut fabric of specific size and if weighed on the scale offered, the reading displayed is the GSM of that fabric.
- Gives precise readings.
- Has durability and enhanced longevity.

SPECIFICATIONS

- Electronic Balance (Table Top)
- Max. Capacity : 600 gm
- Repeatability : 0.01 g
- Linearity : 0.02 g

Tensile Strength Tester (Digital)

FEATURES

- The facility of controlling the test via Microcontroller with Max-force, Tenacity & Elongation.
- Data safety facility is also available.
- Max hold test can be carried very effectively.
- Extremely powerful internal software makes the machine versatile.
- With the availability in varied specifications, these machines are immensely used to check the breaking force of fabric, jute bag, HDPE bag, Carpet and non-woven fabric.
- This machine furthermore renowned as a materials testing machine , is applicable to testing tensile tension, shearing force, peeling force, compressive tension and elongation of components, components, and finished merchandise for plastic, steel, textile, rubber, wire and twisted cord, synthetic chemicals, cowhide, etc.

SPECIFICATIONS

- Capacity : Up to 500 Kgf.
- Accuracy : 10g to 50g S Type Load Cell fixed with Top Grip
- Traverse Speed : 300 & 100mm /min.
- Top Grip is fixed and Bottom Grip is movable type.
- Elongation measurement by Steel Scale and Digital Counter Meter Both.
- Digital Display of Load and Elongation.
- Peak Value of Last test can be read.
- User friendly key panel with switch of Zero setting and peak value of last test
- Motor : 0.5 hp , Crompton / ABB 220V AC 50 Hz



Tensile Strength Tester (Computerized)

FEATURES

- The facility of controlling the test via Microcontroller with Max-force, Tenacity & Elongation.
- Data safety facility is also available.
- Max hold test can be carried very effectively.
- Extremely powerful internal software makes the machine versatile.
- With the availability in varied specifications, these machines are immensely used to check the breaking force of fabric, jute bag, HDPE bag, Carpet and non-woven fabric
- This machine furthermore renowned as a materials testing machine , is applicable to testing tensile tension, shearing force, peeling force, compressive tension and elongation of components, components, and finished merchandise for plastic, steel, textile, rubber, wire and twisted cord, synthetic chemicals, cowhide, etc.

SPECIFICATIONS

- Capacity : Up to 500 Kgf
- Accuracy : 10g to 50g S Type Load Cell fixed with Top Grip
- Display Unit : N/mm², kgf/Cm², Pound
- Operating System : Fully Automatic and Manual Both
- Maximum Grip Separation : 1000mm
- Motor : 0.5 hp , Crompton / ABB 220V AC 50 Hz
- Display Units : Load, Speed , Elongation
- Variable Speed : 50 to 500 mm /min
- Calibration : Self Calibrated
- With Specimen Cutting Template
- With Window based Software licensed to customer : Tensile Strength, Elongation, Yield Strength with Graph. With Desktop Computer with Genuine Window 7 Software



Traverse Thread Counter

FEATURES

- Used to determine number of threads per unit length in both the warp and weft directions.
- Determination of Picks or Ends is needed or the weave is too fine.

SPECIFICATIONS

- Microscope Magnification : 10 X Zoom
- Fabric Can be checked for : ¼ Inch, ½ Inch, 1 Inch or 20mm, 50mm
- 4 Digit digital (Registers each increment with a beep)
- Counter range : 0 to 9999



Conditioning Chamber

FEATURES

- In accordance with industrial standards, these chambers are manufactured
- Rust proof finish
- Excellent durability

SPECIFICATIONS

- Double-Walled Structure Along With Glass Wool Insulation
- Stainless Steel Inner Chamber And Mild Steel Powder Coated Outside Body
- Fully Ss Models Are Also Available
- Two Adjustable Perforated Shelves For Effectively Keeping The Samples
- The Chamber Is Heated With Air-Circulating Fan & Heater
- Electrically Cooled Chamber, With The Support Of Compressor Cooling Coils Set In Ribs On The Chamber Side
- Digital Temperature Indicator & Controller For Temperature Control
- Digital Humidity Controller Controls The Humidity
- To See The Samples There Is A Transparent Viewing Window
- Light Arrangement Inside The Chamber To Check The Samples
- Push Kind Door Locking System
- Power 220 Volt Ac 50 Hz. - Single Phase



Hot Air Oven

FEATURES

- The warm air is evenly distributed throughout the chamber through efficient air circulating fan on top of the chamber.
- Digital Temperature Indicator Cum Controller controls the temperature inside the test chamber.
- Inner walls are of stainless steel and outer walls of mild steel sheet.
- Chamber is provided with two ventilation ports.
- Long life

SPECIFICATIONS

- Inner Chamber Construction : Stainless Steel with air circulation fan
- No. of Shelf : 3 Shelf (removable)
- Temperature Range : Ambient to 250°C
- Temperature Sensitivity : $\pm 0.1^\circ\text{C}$
- Electric Supply : Single phase 220 Volts, AC Supply
- Heater Supply : 1000 watt Single Phase
- Inner I Dimensions of the UNIT : 18" X 18" X 18"
- Net weight of the unit : 30 kg.



Bursting Strength Tester (Analog)

FEATURES

- Analog indication of readings
- Manual Clamping
- Enhanced storage facility allows building a vast data library of all tests carried out at various points
- Simple to operate
- This tester evaluates material test and provide reliable data.

SPECIFICATIONS

- Capacity : 4000 kpa, 568 psi, 40 kg/cm²
- Test Area : 30.5 mm Diameter
- Digital Pressure Gauge : 0 to 100 kg/cm²
- Overall Dimensions of Unit : 470(W) x 300(D) x 410(H) mm.
- Net wt. : 30Kg.

Bursting Strength Tester (Digital)

FEATURES

- Analog indication of readings
- Manual Clamping
- Enhanced storage facility allows building a vast data library of all tests carried out at various points
- Simple to operate
- This tester evaluates material test and provide reliable data.

SPECIFICATIONS

- Capacity : 4000 kpa, 568 psi, 40 kg/cm²
- Test Area : 30.5 mm Diameter
- Digital Pressure Gauge : 0 to 100 kg/cm²
- Overall Dimensions of Unit : 470(W) x 300(D) x 410(H) mm.
- Net wt. : 30Kg.



Shrinkage Template

FEATURES

- To determine directly the % dimensional change (shrinkage) in all types of fabrics.
- Fine calibrated Shrinkage Template with 18" x 18" & 10" x 10" benchmarks length-wise & width-wise.
- Calibrated scale to evaluate shrinkage & stretch directly Up to 15%.
- Two fine tipped black & yellow fabric markers are supplied for accurate marking on light & dark colour fabrics.

SPECIFICATIONS

- Template and shrinkage scale made up of transparent polymer plate to apply standard pressure on test specimen.
- The Shrinkage Scale of 18" length with 6" +/- 1", 9" +/- 2", 12" +/- 2" & 15" +/- 2" area with ready % readings.
- Template has a fine calibrated marking of 6" x 6", 10" x 10", 14" x 14" & 18" x 18" bench-marks. It ensures reading of laundered or dry-cleaned or washed or processed fabric or garment directly and accurately.

Spray Tester

FEATURES

- Spray Tester consists of a stand
- For holding the spray device the button portion have a sample holder at 45°
- Spray device made of glass (or plastic) laboratory funnel which is connected to the spray nozzle by a rubber tube.

SPECIFICATIONS

- Spray nozzle : Converse face with 19 holes of 0.7 mm diameter.
- The rate of water spray : 250 ml in 25 to 30 seconds.
- Dimension : 25cm x 30cm x 55cm
- Weight : 5Kg



Stiffness Tester

FEATURES

- It has a solid aluminum base with nylon foot-rest to keep the base horizontal.
- The equipment's parts are made of stainless steel.
- It has a calibrated scale.

SPECIFICATIONS

- Angle of inclination of intersecting plane to horizontal : 41.5°
- Load on test specimen : 10 ±2 gm / cm length
- Over All Dimensions of the Instrument : 275mm (W) x 140mm (D) x 150 mm (H)
- Net Weight of Instrument : 3 Kgs.

Crease Recovery Tester

FEATURES

- Made of heavy cast base with all parts of stainless steel
- Imported Acrylic Sheet used for making the Rotating Dial.
- To make the movement smooth the Dial moves in a Brass bush.
- The same base has both the Steel Creasing Load and two Round Steel Plates for pressing the specimen.

SPECIFICATIONS

- Size of the Test Specimen : 40mm x 15mm.
- Creasing Load : 1 Kg. (Stainless Steel)
- Angle Measurement : On an Engraved Circular Scale graduated in 1 deg.
- Scale Measurement : 0-180 Degrees
- Weight : 9kg



Beasley Balance

FEATURES

- A light weight beam pivoted on jewel bearings with a hook at one end and a pointer at the other.
- The beam is initially leveled to bring the pointer against a datum line. A standard weight is suspended in a notch on the beam arm on the pointer side.
- A template is used to cut short length of yarn, the length depending upon the count system require. These length are placed the hook until the pointer comes against the datum line. The number of short length required to balance the beam gives the count of the yarn.

SPECIFICATIONS

- The count of yarn is defined as a number indicating its weightage. In direct system, the count is the weight of a unit length of yarn for example - "TEX" is number of grams in one kilometer length of yarn, "DENINER" is number of grams in 9000 meters of Yarn. In INDIRECT System, the count is the number of units of fixed length of yarn which makes a fixed weight for example "COTTON" is number of hanks of yarn in a pound. "METRIC" is number of kilometers of yarn in one Kilogram.

Wrinkle Recovery Tester

FEATURES

- Machine equipped with 0.5 kg, 1 kg & 2 kg load which is a stainless steel used in main body for robustness & resilience.
- Supplied with calibration and inspection certificates with latest design.
- Smooth precision engineered components for excellent performance complete with all accessories – template, marking pen.

SPECIFICATIONS

- AATCC Wrinkle Recovery Tester is used for determining a fabric's ability to recover after wrinkling under a pre-determined load for a set period of time.
- A set of 5"x3" dimensional plastic replicas is offered on request to grade the test samples 1 ~ 5.
- AATCC Wrinkle Recovery Tester Plastic Replicas (Set of 5)
- Weight 5 kg
- Dimensions 175mm x 150mm x 350mm



Drape Meter

FEATURES

- Drape meter to determine the draping/hanging phenomenon of fabrics.
- Ergonomic latest design with stylish appearance.
- With developing chamber
- Supplied with manual where calculation for drape coefficient is given.
- Complete with all accessories – ammonia paper, template etc.
- Supplied with calibration & inspection certificates.
- Weight : 36.6 kg

SPECIFICATIONS

- Power : 1000 W, 220 Vac
- Display Type : Analog
- Material : MS
- Frequency : 50 Hz
- Voltage : 240V
- Size of Developing Chamber : 400 mm x 400 mm x 200 mm
- Size of Test Specimen Diameter : 250 mm
- Size of Specimen Support : 125 mm (Diameter) X 60 mm (Height)
- Size of Exposing Chamber : 400 mm X 400 mm X 800 mm

Flammability Tester (Horizontal)

FEATURES

- **Flammability Tester** the Fabric is kept at 45 degree Angle in a specimen holder rack. It is then exposed to the Flame of specified length 90° from specimen for 1 Second, and is left for burning. The time taken to burn the Fabric is automatically recorded on DIGITAL Timer. After this the grading of the Fabric for Flammability is done as per the Standards i.e ASTM D1230 or other.
- Digital Flammability Tester is made of stainless steel with a fine Acrylic door, which opens upwards. The panel housing all the controls is at Lower Front portion of the Unit. Brushing device for raised fibre fabrics is optional, supplied on demand.

SPECIFICATIONS

- Stainless Steel Body with fine quality acrylic door.
- Flame Source - L.P.Gas
- Flexible Tubing - 1.5 meter
- Specimen Holder receiver tray position - 45° Angle
- Multipurpose gauge to measure flame length.
- Flame Length - 16 mm
- Specimen cutting template size - 500mm x 150mm
- With Digital Timer
- Size of Specimen Holder - 175 mm x 80 mm
- Burning Area - 105 mm x 40 mm



Bundesmann Tester

FEATURES

- Continuous Measuring Mode
- Automatically Replace Nozzle
- Excellent Testing Results
- PC Connect Interface
- Be able to preset tensile force.
- Completely self-acting Electronic lone.
- Adopt microcomputer command scheme.
- Exceptional conceived pneumatic clamp can satisfy the obligations of diverse kinds of check materials.

SPECIFICATIONS

- RPM of Sample Holder : 5± 1
- Angle between Horizontal and plane of the sample
- Center of the sample holder to the vertical axis of rotation the sample holder assembly. : 105± 10 mm
- No. of Jets Mounted : 304
- Center to Center distance between Jets : 20 mm
- Water collected Per Holder : 65 ml / min
- Vertical distance between center of the specimen when fixed in a position at which the drops are released to the bottom of the jets : 1500 + 10 mm
- Exposed diameter of the sample : 100mm
- Length of the base of the wiper assembly : 96 mm
- Radius of the objective surface of the wiper assembly : 6.35 mm
- Thickness of the wiper surface : 5.1 mm

Projection Microscope

FEATURES

- Projection Microscope is a versatile instrument of universal application, design, for all stages of demonstration, measurements, checking, counting and compression in science lab, textile production, medicals and agricultural fields.
- Its a compact dust proof construction, light weight, functional design and quality optical components make it useful instruments in the respective fields.

SPECIFICATIONS

- Observation Screen : 200mm graduated screen, built-in Fresnel lens,
- loop and arrow arrangement and coaxial mechanical stage of size : 135X120mm.
- Nosepiece : Quadruple revolving nosepiece
- Magnification : Provide magnification from 125x to 1000x.
- Illumination : Halogen lamp 12 volts, 100 watts, workable on 220V/110V AC.
- Objectives : 5x, 10x, 20x, and 40x.



Air Permeability Tester

FEATURES

- Air Permeability Tester for textiles consists of an arrangement for holding the test specimens between two flat faces so as to expose a known area to the flow of air through it, a vacuum system to draw air through the exposed area of the test specimens.
- There is an arrangement to measure the volume of air flowing through the test specimen, and arrangement to measure the pressure drop between the faces of the test specimen.

SPECIFICATIONS

- Test Area : 4 cm² and 10 cm²
- Rota meter : 6.0 –60 LPH at NTP
- (Accuracy 3% of FSR) 90 –900 LPH at NTP
- 300 –3000 LPH at NTP
- Vacuum gauge : 0 to 24 mm X 0.1 mm of water column.
- (Inclined tube type for analogue model)
- (Digital with vacuum sensor type for digital model)
- Power Required : 220 VAC, 50, Single phase
- (Other power options are also available on request)

Fabric Inspection Machine (Non Woven Fabric)

FEATURES

Large viewing glass with two way lighting system facilities easy viewing and inspection with a totally detachable body

- CNC aligned rollers with shafts in perfect alignment for proper movement with fabric, complete with inverter drive for flexibility of inspection speed at the touch of a button
- Convenient hand pendant for easy, immediate control to inch forward/backward
- Emergency stop functions incorporated
- The machine comes fitted with meter counter for cross checking as well as a fabric holding tray
- The system consists of a variable speed AC motor with its attachable timer relay system. AC boards and electronics form an internal part of the system

SPECIFICATIONS

Large Viewing glass with two way lighting system facility

- Viewing Glasses Up to : 120"x24"
- Max Fabric : 115"
- Machine Speed : Variable up to 0 -25mts/min
- **Number of Roller 12 Nos**
- **Motor**
- 1) 1Nos 1.0HP, 1440RPM 3Phase with 1:15 Ratio Gear Box With VFD
- 2) 1 Nos 1 HP, 960 RPM, 3 Phase
- German Technology Digital Counter Meter for the correct and accurate metering
- Cloth Winding Up to 15 Inches
- 16 Nos LED Light for high illumination

Electricals Details

- 1) AC Drive Make-Innovance/Delta/Simens
- 2) Complete Panel Board with Internal Consoled wiring
- 3) Start, Stop, Reverse and Forward Function.
- 4) Cloth Measuring by Digital Counter
- 5) Tension Controller for the maintaining tension on the fabric



Fabric Inspection Cum Rolling Machine

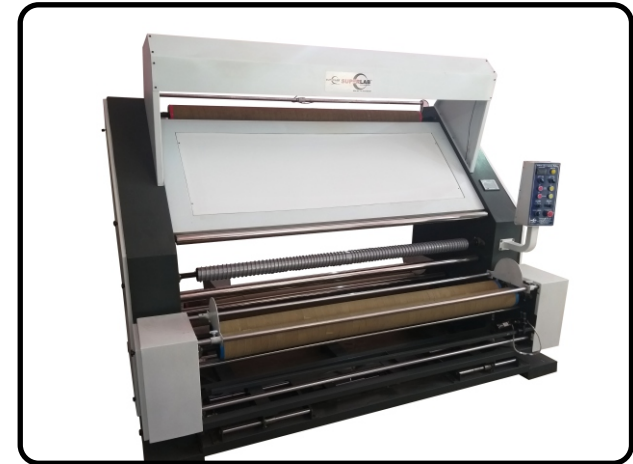
FEATURES

- Large viewing glass with two way lighting system facilities easy viewing and inspection with a totally detachable body
- CNC aligned rollers with shafts in perfect alignment for proper movement with fabric, complete with inverter drive for flexibility of inspection speed at the touch of a button
 - Convenient hand pendant for easy, immediate control to inch forward/backward
 - Emergency stop functions incorporated
 - The machine comes fitted with meter counter for cross checking as well as a fabric holding tray
 - The system consists of a variable speed AC motor with its attachable timer relay system. AC boards and electronics form an internal part of the system

SPECIFICATIONS

Large Viewing glass with two way lighting system facility

- | | |
|---|---|
| <ul style="list-style-type: none"> • Viewing Glasses Up to : 120"x24" • Max Fabric : 115" • Machine Speed : Variable up to 0 -25mts/min • Number of Roller 20 Nos • Motor • 1) 1Nos 1.0HP, 1440RPM 3Phase with 1:15 Ratio Gear Box With VFD • 2) 1 Nos 1 HP, 960 RPM, 3 Phase • German Technology Digital Counter Meter for the correct and accurate metering • Cloth Winding Up to 15 Inches • 16 Nos LED Light for high Illumination • With Web Guider for the making perfect roll | <ul style="list-style-type: none"> • Electricals Details • 1) AC Drive Make-Innovance/Delta/Simens • 2) Complete Panel Board with Internal Consoled wiring • 3) Start, Stop ,Reverse and Forward Function. • 4) Cloth Measuring by Digital Counter • 5) Tension Controller for the maintaining tension on the fabric |
|---|---|



Fabric Inspection Machine For Open Width Lycra Knitted Fabric



FEATURES

- Large viewing glass with two way lighting system facilities easy viewing and inspection with a totally detachable body
- CNC aligned rollers with shafts in perfect alignment for proper movement with fabric, complete with inverter drive for flexibility of inspection speed at the touch of a button
 - Convenient hand pendant for easy, immediate control to inch forward/backward
 - Emergency stop functions incorporated
 - The machine comes fitted with meter counter for cross checking as well as a fabric holding tray
 - The system consists of a variable speed AC motor with its attachable timer relay system. AC boards and electronics form an internal part of the system

SPECIFICATIONS

Large Viewing glass with two way lighting system facility

- | | |
|--|---|
| <ul style="list-style-type: none"> • Viewing Glasses Up to : 120"x24" • Max Fabric : 115" • Machine Speed : Variable up to 0 -25mts/min • Number of Roller 20 Nos • Motor • 1) 1Nos 1.0HP, 1440RPM 3Phase with 1:15 Ratio Gear Box With VFD • 2) 1 Nos 1 HP, 960 RPM, 3 Phase • German Technology Digital Counter Meter for the correct and accurate metering • Cloth Winding Up to 15 Inches • 16 Nos LED Light for high Illumination | <ul style="list-style-type: none"> • Electricals Details • 1) AC Drive Make-Innovance/Delta/Simens • 2) Complete Panel Board with Internal Consoled wiring • 3) Start, Stop ,Reverse and Forward Function. • 4) Cloth Measuring by Digital Counter • 5) Tension Controller for the maintaining tension on the fabric |
|--|---|

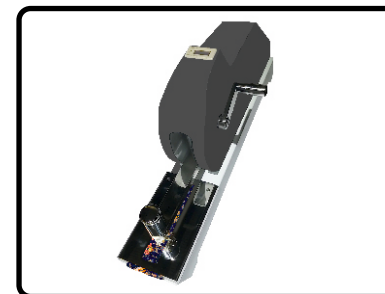
Crock Meter (Manual)

FEATURES

- To determine the Color Fastness of Textiles rubbing at wet / dry condition.
- The equipment consists of a counter.
- It also consists of an operating handle
- Tests the color fastness of the textile in a very accurate manner.
- It gives not only accurate but quick results also.

SPECIFICATIONS

- Diameter of the Rubbing Finger : 16 mm & 25 mm.
- Force on the Finger : 9 N & 20 N.
- Size of Crocking Cloth : (5 x 5) Cms & (7 x7) cms.
- Length of the Traverse : 100 ±5 mm Counter (Re-settable).
- 4-Digit Counter Size of Test Specimen.
- Dimension of the Unit : 200 (W) x 700 (D) x 200 (H) mm.
- Net Weight of the Unit : 7 Kg.



Crock Meter (Motorised)

FEATURES

- To determine the Color Fastness of Textiles rubbing at wet / dry condition.
- The equipment consists of a digital pre set counter.
- It also consists of an mptorised operating system
- Tests the color fastness of the textile in a very accurate manner.
- It gives not only accurate but quick results also.

SPECIFICATIONS

- Diameter of the Rubbing Finger : 16 mm & 25 mm.
- Force on the Finger : 9 N & 20 N.
- Size of Crocking Cloth : (5 x 5) Cms & (7 x7) cms.
- Length of the Traverse : 100 ±5 mm Counter (Re-settable).
- 4-Digit Counter Size of Test Specimen.
- Dimension of the Unit : 400 (W) x 700 (D) x 200 (H) mm.
- Net Weight of the Unit : 35 Kg.

Washing Fastness Tester

FEATURES

- Washing Fastness Tester is used widely for determining color fastness of textile materials to washings.
- Possess electric heater to heat water in water bath.
- The microprocessor based programmer is provided for temperature control.
- Buzzer to indicate the completion of the process cycle or step.
- The color fastness of textile material is determined by way of mechanical hesitation of a specimen of textile with the piece of specified adjacent fabrics in Standard Soap Solution followed by rinsing and drying. Thereafter, the change in color of specimen and stains of the adjacent fabrics are assessed with standard grey scale.

SPECIFICATIONS

- Electric Supply : Single phase 220 Volts, AC
- Heater : 1.5 KW x 2 nos.
- Inner dimensions of the Main Bath : 450 X 410 X 295 mm
- Number of Beakers : 04 /06/08/16Nos (Options Available)
- Leak-proof Beakers with Gaskets of each Beaker : 550/1200 Beakers
- Distance from Shaft : 45±10 mm
- Speed of Rotation : 40±2 rpm.
- Temperature Controller : Programmable Memory Based on Digital Temperature Controller PT-100 with ±2.0°C
- Motor Capacity : ½ HP with Geared Motor 220 Volt AC Overall
- Dimensions of the unit : 700 x 500 x 500 mm.



Exposure Rack

FEATURES

- Seamless finish
- Appealing design
- High stability
- Moisture proof
- Crack resistance

SPECIFICATIONS

- Tilted: 45° Horizontal
- It is designed to test colour fastness of textiles materials to daylight.
- Exposure Rack is used for the colour fastness against sunlight of textile fabrics.
- The test is carried out by exposing a set of light fastness standard fabrics 1 to 8 and a set of test specimens to daylight

Light Fastness Tester (MBTL)

FEATURES

- Light fastness tester or color fastness tester technique to determine the color fastness through sun light of textiles and garments.
- All dyed material experience change in color when showing to day light for a adequately long period because of the act of sunlight.
- The light fastness test is signified by the number of the light fastness standard fabric that change color as the test specimen. It is describe as the numerical score for light fastness.

SPECIFICATIONS

- Light Source: MBTL (Mercury Blinded Tungsten Lamp) Fading Lamp 500 W
- Temperature Inside Chamber: Ambient to 500C
- Temperature Control: By water Circulating inside chamber and Sample Holders
- Humidity inside Chamber: 50 – 60 % RH
- Humidity Control: By Cylindrical Cells (50Nos)
- Specimen Holders: Made of Stainless Steel
- No. of Specimen Holders: 4 Nos.
- Size of Specimen: 100 x 50 mm
- Water Tank: Made of Stainless Steel
- Water Circulating Pump: Separate from Main Unit
- Tubing: Flexible Transparent Type
- Buzzer: Attached with timer
- Water: Use of distilled water only in the water circulation unit.
- Power: 230 V, Single Phase AC 50 Hz
- Power Consumption: 0.75 KWH



Light Fastness Tester (Xenon Arc)

FEATURES

- Air cooled Xenon Lamp with 1.5 KW
- Measure control and display of radiance from 250 w/m² to 750 w/m² at 420 cm.
- Measure control and display of black panel temperature (BPT/BST) from 9° to 90°, relative humidity
- Display, record and setting of exposure time and usage of Lamp.

SPECIFICATIONS

- Model : SUPERLAB Xenon
- Voltage : 240V, Single Phase
- Power : 3 KW
- Dimension : 1000mm (L) x 500mm (W) x 500mm (H)
- Weight : 60 Kg

Prespiro Meter

FEATURES

- Can also be used for testing color fastness against sea water and water.
- Made of stainless steel frame.
- A different load for AATCC standards is available on request.
- User friendly and corrosion resistant.
- Smooth precision engineered components for excellent performance.

SPECIFICATIONS

- Frame Construction : Stainless steel
- Load on the Test Specimen : 5 kg.
- Size of Test Specimen : 100 mm x 40 mm
- Size of Acrylic Separator Plates : 115 mm x 60 mm
- Number of Separator Plates : 21 Nos.
- Dimensions of the Unit : 225 mm (L) x 72 mm(W) x 182 mm(H)
- Net weight of the Unit : 8.3kg



Sublimation Fastness Tester

FEATURES

- Testing the effect of direct heat on the dyestuff up to 250°C temperature range.
- In a single test, entire range of effective temperature can be tested.
- The heating pads are made up of hard chromed electrolyte copper for even and quick distribution of heat..
- Can test entire range of temperature in a single test.

SPECIFICATIONS

- Power requirements : 220 VAC, 65 watt
- Temperature range for test : up to 250°C
- Temperature settings : Variable Temp setting on each pad.
- Power readout : Digital display for each pad.
- Number of heating stations : 3
- Total number of pads : 6 heating pads, 2 for each heating station, with individual heating
- Size of each pad : 40 mm x 100 mm.
- Timer Range : 0-60 sec.
- Machine Dimensions : 38 cm (W) x 34 cm (D) x 28 cm (H)
- Machine Weight : 15 Kg.

HTHP Beaker Dyeing Machine

FEATURES

- The machine comprises of tank, beaker and gear box
- The beakers are capable of withstanding pressure upto 5.0 Kg/cm square.
- The machine is complete in stainless steel
- Ensures a sound free and smooth working.
- Microprocessor based programmer is provided which ensures temperature control.
- Promises long life and leak proof service even after many years of use.

SPECIFICATIONS

- Electric Supply : Single phase 220 Volts, AC Supply
- Capacity of Beaker : 250 ml Beaker X 12 Pcs
- Carriage Rotation : 30 rpm. (±2 rpm)
- Maximum operating Temperature : 135°C.
- Maximum rate of heating : 3.5°C/Min.
- Controller : Microprocessor Controller(DP 01)
- Heater rating : 3 x 2 KW
- Medium used for Heating : Glycerin
- Motor : Reversible Synchronous Geared Motor
- Overall dimensions of the Unit : 800(L)x700(H) x500 (W)
- Net Weight of the Unit : 85 Kg.



I.R Beaker Dyeing Machine

FEATURES

- Crease and spot free sample dyeing.
- Knitted and woven fabrics as well as yarn can be dyed.
- Cotton, wool and synthetic materials.
- State of the art process controller with large integrated program memory.
- Low liquor ratio : 1:5 fabric dyeing cotton.
- Stainless steel cabinet.
- Soda ash adding without opening the beakers.
- No glycerin or cooling water needed.
- Very good price / performance value.

SPECIFICATIONS

Model	12x250ML	18x250ML	24x250ML
Heating	Infra Red Rays	Infra Red Rays	Infra Red Rays
Cooling	By Air	By Air	By Air
Heating Power	3KW	3KW	6KW
Cooling Power	1/10HP Motor	1/10HP Motor	1/10HP Motor
Drive Power	1/4HP	1/4HP	1/2HP
Rotation (RPM)	0 to 50	0 to 50	0 to 36
Automation	DP-02	DP-02	DP-02
Max. Temperature	145 Degree	145 Degree	145 Degree
Max. Rate of Heating	4 Degree	4 Degree	4 Degree
Max. Rate of Cooling	2.5 Degree	2.5 Degree	2.5 Degree
Material of Beaker	S.S 316L	S.S 316L	S.S 316L
Machine Body	S.S 304	S.S 304	S.S 304
Electric Supply	230V, 1Phase, 16A	230V, 1Phase, 16A	415V, 3Phase, 16A
Machine Dimensions	500x650x770	600x650x870	720x680x990
Machine Net Weights	110KGS	135KGS	155KGS
Machine Gross Weights	175KGS	210KGS	225KGS

Rota Dyer Machine

FEATURES

- Sturdy construction
- Easy operations
- Longer service life
- Low maintenance

SPECIFICATIONS

- Carriage RPM : 24 with Reverse and Forward
- Automation : Through Micro Processor Controller.
- Electrical Heating for Temperature : Upto 98°C
- Heating : 3 KW.
- Electrical Supply : 215V, Single Phase, 50Hz





Laboratory Padding Mangle

FEATURES

- Versatile machine, can be used for dyeing, printing and finishing trials..
- For even pressure throughout, pneumatic loading of the bowl.
- Small unheated trough provided for padding a small size samples.
- Nip padding trough and doctor blades available as standard accessories..
- 2 bowl padding mangle.

SPECIFICATIONS

- Model : Table top motorized
- Working With : 450 mm and 600 mm
- Automation : Microprocessor Controller
- Heater : 1.5 KW
- Motor : ½ HP single phase with VFD
- Heating Trough capacity : 800 ml
- Cloth speed : Variable up to - 6 mtr/min
- Bowl Hardness : 65°-70°
- Weight : 120 Kg
- Dimension : L1030mmxW650mmxH790mm and

Water Bath (Doubled Walled)

FEATURES

- Open Bath/Water Bath are fabricated out of 304 quality stainless steel.
- Beaker is made of 316 quality stainless steel.
- Buzzer to indicate the completion of the process cycle or step.
- Equipped with controller in order to control Time v/s Temperature profile.

SPECIFICATIONS

- Capacity : Max. 6--24 Beakers
- Capacity of Beaker : 300 ml.
- Temperature : Maximum operating Temperature 95°
- Maximum rate of heating : 3.5°C/Min.
- Electric Supply : Single phase 220 Volts AC Supply
- Heater Supply : 1000 watt Single Phase
- Medium used for Heating : Water
- Electrical Supply : Single Phase
- Overall dimensions of the Unit : 24" (W) x 16" (D) x 12" (H)
- Net Weight of the Unit : 27 Kgs. with 6 Beakers.



Lab Winch Dyeing Machine

FEATURES

- In Laboratory Winch the dyeing is carried out in relaxed Condition with Minimum tension on fabric.
- There is no distortion to fabric structure.
- Detachable winch which will help to easy loading of hanks.
- The temperature, Time and the drive is controlled though micro processor

SPECIFICATIONS

- Material of Construction : S.S.316
- Maximum liquor Capacity : 9 Liter
- Heating : Indirect electric heating
- Winch Speed : A. C. Motor of speed 17 rpm
- Electrical Supply : 230V A.C. Single Phase, 15 amps.
- Power Requirement : 2 KW.
- Dyeing Temperature : up to 95°C

Atmospheric Pressure Beaker Dyeing Machine

FEATURES

- This is an ideal machine for carrying out the dyeing trials for cotton yarn or fabric under atmospheric conditions
- Machine is more suitable for an application where time to time addition is require in the beaker liquor Machine as a standard model of 12-SS beaker of 250 ml.
- Capacity mounted in the heated water bath and samples are attached to the end hooks of the bar,
- These bars are given upward and downward movements and also rotate at a fix RPM with direction / reversal every 3 minute to enable the better agitation inside the beaker liquor for better dyeing results.

SPECIFICATIONS

- Capacity : Max. 6-24 Beakers
- Capacity of Beaker : 300 ml.
- Temperature : Maximum operating Temperature 95°
- Maximum Rate of Heating : 3.5°C/Min.
- Electric Supply : Single phase 220 Volts AC Supply
- Heater Supply : 3000 watt Single Phase
- Medium used for Heating : Water
- Overall Dimensions of the Unit : 24" (W) x 16" (D) x 12" (H)
- Net Weight of the Unit : 50 Kgs. with 6 Beakers



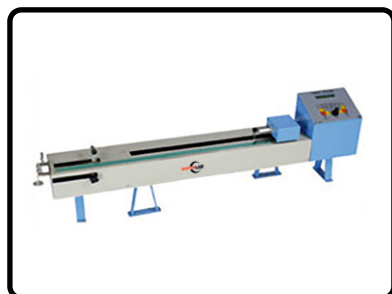
Twist Tester (Manual)

FEATURES

- Ergonomically latest design with modern aesthetics.
- Smooth precision-engineered mechanism.
- With analogy re-settable twist counter.
- Complete with all accessories along with proper tension device.
- Supplied with calibration & inspection certificates.

SPECIFICATIONS

- Test length : 50 mm, 100 mm, 150 mm & 200mm
- Counter : Five digit revolution counters to give twist directly and Z twist by subtracting from 100,000
- Overall Dimension of the units : 350mm (L), 100mm (W), 100mm (H).
- Weight of Machine : 12 Kg



Twist Tester (Motorized)

FEATURES

- Micro-controller based Electronic Twist Tester.
- Motor driven Fully automatic instrument.
- Auto stop facility for motor.
- In-built sensor.
- Alphanumeric backlit LED display unit.

SPECIFICATIONS

- Length of Specimen : 250 mm Fixed
- Display : Digital LED display
- TPM : up to 9999 TPM (Direct display)
- TPI : up to 250 TPI
- Resolution : 1 Count for TPM / 0.25 Count for TP
- Tension Weight : 5g, 10gm, 20gm, 50gms
- Motor Speed : 0 to 96 RPM
- Power Supply : 220VAC 50 Hz
- Weight Approx : 10 Kg

Wrap Reel (Manual)

FEATURES

- Possess solidly constructed Swift/Wheel that ensures permanent retention of its circumferential accuracy.
- Manual traversing motion which spreads the yarn evenly across the swift.
- Fitted with Digital Counter which records Yards/Meters upto 999999.

SPECIFICATIONS

- Swift Perimeter : 1 Meter
- Number of leas made at a time : 12 cones
- Spread of each lea : 20 mm
- Overall Dimensions of the main Unit : 500 (L), 300mm (W), 400mm (H).
- Net Weight of the main Unit : 25 Kg.



Wrap Reel (Motorized)

FEATURES

- Possess solidly constructed Swift/Wheel that ensures permanent retention of its circumferential accuracy.
- Provides automatic traversing motion which spreads the yarn evenly across the swift.
- Fitted with Digital Counter which records Yards/Meters upto 999999.
- Powered by a special Geared Motor
- Constant reading speed at about 120 Meter per minute.

SPECIFICATIONS

- Swift Perimeter : 1 Meter
- Number of leas made at a time : 12 cones
- Spread of each lea : 20 mm
- Overall Dimensions of the main Unit : 750mm (L), 400mm (W), 450mm (H).
- Net Weight of the main Unit : 35 Kg.
- Controls : MAIN, ZERO/RESET CONTROLLER.

Yarn Appearance Board Winder

FEATURES

- Manually/Motorized operated.
- Checks the evenness & appearance of yarn.
- Precise preparation for accurate assessment of imperfection to grade the yarn against photographic comparison standards.
- Is used for winding the yarn on the blackboard for visual examination and grading the yarn as per standards.
- Choices of wide range of rectangular and tapered boards.

SPECIFICATIONS

- Size of Tapered Board : 28.5cm x 18 cm.
- Size of Rectangular Board : 28.5cm x 18 cm
- Standard Yarn Spacing : 20, 22, 26, 32, 38, and 48 WRAPS per INCH
- Over all Dimension of the Unit : 700 mm (W) x 375 mm (D) x 300mm (H).
- Net Weight of the Unit : 25 kg



Fiber Fineness

FEATURES

- Fineness (Weight per unit length and Maturity have been recognized to be two of the important raw cotton characteristics : maturity influences the nepping potential of cotton 1, and fineness decides the spinning value of cotton 3 and affects yarn regularity and strength 2.

SPECIFICATIONS

- Micronaire value (Mc)
- Fineness (Wt. Per unit length in mtex-H), and
- Percent maturity (PM)

Yarn Tension Meter

FEATURES

- This instrument is manufactured in an easy to handle design, size and weight.
- Gives accurate results.

SPECIFICATIONS

- 7 Measuring ranges from 1 - 5 cN to 10 - 100 cN, head width - 43 mm
- 6 measuring ranges from 3 - 30 cN to 20 - 300 cN, head width - 63 mm



Shade Card Winding Machine

FEATURES

- With digital Preset Counter
- Tailor Made (Customized as per your shade card)
- Specially designed equipments to determine make shade card of dyed or colored yarn.
- No. of shades as per customer requirement.
- With yarn tension devices
- With creel suitable for cones or bobbins or reels.

SPECIFICATIONS

- No. of Shade made at a time : 5 or 10
- Wirth of Shade : 5 mm to 20 mm
- Gap Between the shade : 5 mm to 20 mm
- Motor : ¼ HP 220 VA
- Dimenssion : 300 mm x 600 mm x 350 mm
- Weight : 25 Kg



Package Hardness Tester

FEATURES

- Very useful for spinning mills
- Latest design with elegant look.
- Handy, easy to operate.
- Duly packed in a plastic case for safety.
- With calibrated precision digital reading in degree shore.
- Smooth precision-engineered components for exceptional performance.
- Supplied with calibration & inspection certificates
- Easy access to sample table.

SPECIFICATIONS

- Portable instrument
- Determine density or hardness of yarn cone/package or beams of yarn or fabric
- Avoid damage to bobbins and warp beams
- Flat working surface is recommended
- Ideal for bobbins with a diameter of more than 400 mm
- Hardness Tester with indentation ball of 2.5 mm diameter is recommended for hard packages
- 5 mm diameter for standard packages
- 10 mm diameter for soft packages



Stroboscope

FEATURES

- Enables measuring the speed of fast-moving objects.
- Does RPM check
- Produces the optical effect of stopping or slowing down high-speed motion for purposes of observation.
- Emits a high-intensity, short-duration flash of light.
- Stroboscope features an electronic pulse generator.

SPECIFICATIONS

- Measurement Range : 150~18000FPM
- Display : 5 - 10mm LED
- Flashes per minute : 150-18000
- Accuracy : $\pm (0.05\%n+1d)$
- Resolution : 0.1 FPM(Less 1000 FPM) 1 FPM (Over 1000 FPM)
- Sampling time : 0.3 Second
- 2 ranges : H, L (High, Low)
- Flash adjust : Coarse adjustment, fine adjustment, $\times 2$ and $\div 2$ for fast check
- Triggering Mode : Interior/Exterior
- Temperature : 0° ~ 40° C
- Humidity : Less than 85%RH

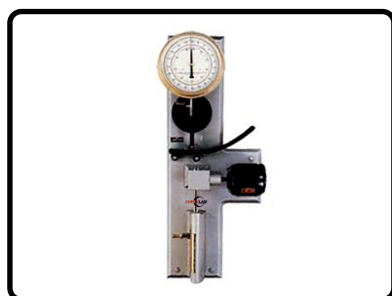
Yarn Tensile Strength Testing

FEATURES

- Tensile strength and elongation of Yarn can be effectively determined.
- Force rating upto 9.999 kg
- Crosshead speed is 20 to 400 RPM variable.
- Extremely powerful interactive software makes the machine versatile

SPECIFICATIONS

- Force Rating : 0.000 to 9.999 kg
- Force Resolution : 0.001 kg
- Force measurement accuracy : $\pm 0.5\%$ of FSD
- Minimum Crosshead stroke : 750 (approx)
- Crosshead Resolution : 1mm
- Grips : Yarn Grip
- Crosshead speeds : 20 to 400 RPM variable
- Power Supply : 230 VAC, 50Hz, Single Phase
- Size & Weight : 15" x 15" x 36" and 60 Kg



Lea Strength Tester

FEATURES

- Lea strength and elongation of Yarn can be effectively determined.
- Force rating upto 9.999 kg
- Crosshead speed is 20 to 400 RPM variable.
- Extremely powerful interactive software makes the machine versatile.

SPECIFICATIONS

- Force Rating : 0.000 to 9.999 kg
- Force Resolution : 0.001 kg
- Force measurement accuracy : $\pm 0.5\%$ of FSD
- Minimum Crosshead stroke : 750 (approx)
- Crosshead Resolution : 1mm
- Grips : Yarn Grip
- Crosshead speeds : 20 to 400 RPM variable
- Power Supply : 230 V AC, 50Hz, Single Phase
- Size & Weight : 12" x 12" x 30" and 20 Kg

Salt Spray Tester

FEATURES

- Salt Spry Tester has been designed strictly as per the relevant standard to asses the ability of rust proofed components to withstand corrosion due to atmospheric conditions. It is double walled. (Stainless Steel 316 inside and outside mild steel duly powder coated).

SPECIFICATIONS

- Work Space: Rectangular inside size: 900 X 750 X 600mm.
- Temperature Range: Ambient to 60° C. (Temp. Requirement 35 +/-°C)
- Temperature Accuracy: +/- 1°C.
- Temperature Control: Solid state digital programmable temperature controller cum indicator with special zero corrosion PT 100 Sensor.
- Material: Stainless Steel Main body grade 316 inside and outside M S Powder coated with transparent lid to observe sample under test.
- Air Regulator: Moisture cum oil filter and air regulator ranging from 0 to 30 PSI is provided.
- Pressure Gauge: A calibrated pressure gauge is provided for measuring for reliable atomizing.
- Solution Storage: A temperature controlled non-corrosive storage tank for solution storage is provided with immersion heater fitted in it.



BOD Incubator

FEATURES

- The body of BOD Incubator is durably constructed to provide long years of working life.
- The exterior is made of powder coated painted mild steel; while, inner chamber is made of 304 grades stainless steel.
- There is inner door, which is made of unbreakable transparent acrylic sheet or tempered glass.
- Outer door is insulated and made of powder coated painted MS.

SPECIFICATIONS

- Capacity : 3 cu. Ft to 24 cu. Ft.
- Working temperature : 5°C to 60°C
- Accuracy : ±2°C throughout chamber
- Controller : Digital PID controller with ± 5^o Accuracy
- Sensor : PT-100
- Air circulation : Blower fans

Digital Photo Calorimeter

FEATURES

- Digital wavelength selection with touch membrane switches.
- 9 digital filters 405 nm 630 nm.
- Latest LED based technology.
- Graphical battery indication.
- Auto power saving mode.

SPECIFICATIONS

- Weight (kg) : 1 kg
- Voltage (V) : 230 V
- Accuracy : +/-0.01 O.D.
- Wavelength Range Filters : 400 - 700 nm
- Stability : +/-0.02 O.D. Per Hour
- Volume : 1 ml
- Minimum Order Quantity : 1 Piece



UV-VS Spectrophotometer

FEATURES

- Its comes with wavelength range of 190-1100 nm (1200 Lines/mm grating)
- Basic/Quantitative/Wavelength Scan/DNA Protein Test/Kinetics operational modes.
- For efficient performance, the system can deliver Fast / Medium / Slow scanning support as well as wavelength accuracy of +0.1 nm, bandwidth of 0.5, 1,2,4,5 and wavelength reproducibility of 0.1 nm.

SPECIFICATIONS

- Wavelength Range : 190-1100 nm
- Noise : +0.001A
- Stray Light : 0.05% T @ 220nm, 360 nm)
- Data Output Port : USB
- Baseline Flatness : + 0.001 A
- Photometric Display Range : 0-200 % T, -0.3 - 3.0 A, 0-9999 C
- Wavelength Reproducibility : 0.1 nm
- Bandwidth : 0.5, 1,2,4,5
- Detector : Silicon Photodiode
- Dimensions (L*W*H) : 630 x 430 x 206 mm
- Display : Graphic LCD (320*240 Dots)
- Lamps : Deuterium & Tungsten Halogen Lamp
- Net Weight : 26 Kg
- Photometric Accuracy : + 0.3 % T
- Photometric Repeatability : + 0.2 % T
- Printer Port : Parallel Port
- Scanning Speed : Fast / Medium / Slow
- Stability : 0.001A/h @ 500 nm

Melt Flow Index Tester

FEATURES

- Melt Flow Index Tester is used to measure the flow rate of different plastics (polymers).
- The melt flow is defined as the weight of molten granules in 10 mins.
- It is equipped with an in-built preset timer that assumes high repeatability and accuracy of test results.

SPECIFICATIONS

- Display : - LED digital
- Temp. Range : - 45-300°C
- Resolution : - 1°C
- Timer : - 999 sec
- Dimension Of Die : - 2.095 mm
- Dimension Of Piston Head : - 9.50 mm
- Weights : - 25 Kg



Muffle Furnace

FEATURES

- Muffle furnace is manufactured for using in laboratories, industrial and mining enterprises as well as research and development. Medium temperature muffle furnace with ceramic fiber lining which provides flash heat and low power consumption. Heating elements are fixed in walls of working chamber which protects them from splashes. Thus it helps to increase service life of the muffle furnace.

SPECIFICATIONS

- Measurement Range : 150-18000FPM
- Display : 5 - 10mm LED
- Flashes per minute : 150-18000
- Accuracy : ± (0.05%n+1d)
- Resolution : 0.1 FPM (Less 1000 FPM) 1 FPM (Over 1000 FPM)
- Sampling time : 0.3 Second
- 2 ranges : H, L (High, Low)
- Flash adjust : Coarse adjustment, fine adjustment, ×2 and ÷2 for fast check
- Triggering Mode : Interior/Exterior
- Temperature : 0°-40°C
- Humidity : Less than 85%RH

Orbital Shaker

FEATURES

- The efficient and diligent shaking system of our shaker has a shaking movement which is powered by a reliable heavy duty DC motor.
- The variable speed motor at the base the complete unit is mounted on a angle iron frame
- Compact counter balanced drive mechanism ensures high stability and reliability even in continuous operation & uneven load distribution.

SPECIFICATIONS

- Variable shaking speed : 50 RPM to 200 RPM
- Power : AC 220 / 230V
- Platform size : 14" x 14"
- Capacity : 18 x 50 ml
- Motor : DC motor 1/4HP



Magnetic Stirrer

FEATURES

- Magnetic Stirrer have additional hot plate for achieving heating of solutions to be stirred.
- A magnetic stirrer is used in Laboratories for stirring, it comes with a rotating magnetic field which helps the stir bar to get immersed in the liquid and help in mixing the liquid.
- The heat here is controlled through energy regulator that ensures regulation at any desired percentage of capacity of heater.
- Further, the system runs at fixed speed with presence of compact stirring device that utilizes rotating magnetic field created by permanent magnet that induces variable speed stirring actions.

SPECIFICATIONS

- Capacity : 500ml
- Voltage : 220/230 Volts
- Display Type : Digital
- Speed Speed Speed : 1250 rpm
- Top Plate Size : 135 x 135 mm
- Max Volume Max Volume : 2000 ml
- Max Temperature : 300°C
- Temperature Accuracy : +/-2°C



Moisture Balance

FEATURES

- Moisture analyzers is used for quick and precise determination of material humidity upon the basis of weight loss during drying of its small sample. Halogen radiators ensure effective sample drying.

SPECIFICATIONS

- Capacity : 120 g
- Reading unit : 1 mg
- Humidity Readout Precision : 1% (sample 0,02+0,5g) 0,1% (sample 0,5+5g) 0,01% (sample >5g)
- Humidity Measurement Repeatability : +/- 0,1% (sample 2g)+/- 0,04% (sample 5g)
- Working Temperature : 1-180 s
- Drying Temperature : 50 g
- Sampling Time : 0.001 %
- Device Weight : 3,9 kg
- Pan Size : Dia 90 mm
- Dimensions : 380x480x340 mm



TDS Meter

FEATURES

- Model : TDS Table Top Model
- Usage : Industrial, Laboratory
- Display : 3 1/2 Digit LED
- Temperature Compensation : Manual 0-50°C
- Cell Constant Adjustment : Adjustable
- Weight : 2 kg. (Approx.)

SPECIFICATIONS

- Display : 3 1/2 Digit LED
- Range : 5 Ranges 0-1000 ppt Mohs/cm
- Temperature : Compensation Manual 0-50°C
- Cell Constant Adjustment : Adjustable
- Conductivity Cell : Platinum DIP
- Measuring : Frequency 1000 Hz

Water Distillation

FEATURES

- Water distillation unit steel body 304 grade sheet, the cock that comes fitted to the unit is of brass metal with CP. Wall mounting clamp.
- Further, the unit also comprises flexible tubing, supplied with cord as well as plug and work on 220 230 AC Volts
- Supply, applications :used for regular testing by:, steel manufacturing units, ferrous and alloy steel foundries, forging units, wire drawing units, quality control testing laboratories

SPECIFICATIONS

- Capacity : 4 litres
- Material : Stainless Steel
- Dimensions LxWxH : 30.5 x 76.2 x 30.5 Centimeters
- Weight : 20 Kilograms



pH Meter

FEATURES

- Ph Meter is automatic temperature compensation combination pH electrode and RTD probe
- Its support of 3 1/2 Digit, LED display.
- We also offer the meters with auto temperature compensation facility that allows it to perform pH, ORP as well as temperature measurements with faster accuracy and response time

SPECIFICATIONS

- Type : Digital
- Display : 3 1/2 digit LED
- pH Range : 0-14
- Display : 16 x 2 alpha numeric LCD display
- Range : 0 to 14 pH 0 to + 1999.9 mV, Temp. 0 to 100°C
- Resolution : 0.01 pH 0.1 mV Temp. 0.1 Deg. C
- Accuracy : + 0.01 pH + 1 digit mV, Temp + 0.10
- Calibration : Auto / Manual
- Storage : Upto 100 samples
- Power : 230V + 50Hz

Calendering Machine

FEATURES

- Superlab latest flat work ironers have a wide range to serve the textile, export, hotel and hospital needs.
- The flat work ironers are manufactured using the state-of-the-art technology to carry out the largest laundry job. Its flexible chest design causes uniform high pressure between the roller and the chest. The bed is technically designed to maintain pressure between the bed and the roll.

SPECIFICATIONS

Frequency	: 50 Hz
Brand	: Superlab
Machine Type	: Automatic
Voltage	: 110-415 V
Phase	: 3 phase
Max Ironing Temperature	: 158° C
Ironing Width	: 1500-3000 mm



Boiler

FEATURES

- Electric Consumption - 500 watts
- Made of running seamless shell & Seamless tube technology
- Low Fuel Consumption (1.0 - 6.0lt/hr)
- Modern Design to install in the finishing hall without heating effect.
- It Works on principle of reverse flame technology where flame & gases reverse in air tight chamber & in the process result in complete combustion & absolute utilization of energy with output efficiency of 90%.

SPECIFICATIONS

Voltage	: 220V
Steam Pressure Bar	: 6
Pump	: 1 HP
Power Consumption	: 1 Kw
Model	: Superlab

Washing Machine

FEATURES

- Adjustable Speed
- High in Quality
- Better Performance
- Highly Reliable
- Low energy consumption
- Stainless steel Inner Cylinder & PU painted outer body
- Built in solvent filter ensuring maximum recovery of clean solvent
- Safety main door switch
- Auto Timed, Auto reverse & no solvent dripping
- Dual Motor and belt drive

SPECIFICATIONS

Industrial Washing Machine Front Loading, Open Pocket, heavy duty.

Product Code	Dry Wt. Per Charge	Basket Size Volume	Wash Motor/speed	Extract Motor Extract Speed	Main Door Size	Water-Connection Consumption	Drain (mm)	Heating			Overall Dimensions WxDxH (mm)
								Steam Connection/Consumption	Electrical Capacity	Thermal Fluid Connection/consumption	
CF02A	25 Kg. 25 Kg.	960x500 362 Lts	0.75 Kw 35 RPM	2.25 Kw 200 RPM	650	1.0 BSP 125 Lts/Full	75	0.5BSP 25 Kg/Hr	12 Kw	1x1 BSP 10000 Kcal/Hr	1120 x1450 x1750
CF02B	50 Kg. 50Kg.	1110x760 735 Lts	1.5 Kw 35 RPM	3.375 Kw 200 RPM	800	1.5 BSP 250 Lts/Full	75	0.5BSP 50 Kg/Hr	24 Kw	1x1 BSP 20000 Kcal/Hr	1240x 1800x 1900
Product Code	Dry Wt. Per Charge	Basket Size Volume	Wash Motor/speed	Main Door Size	Water-Connection Consumption	Drain (mm)	Heating			Overall Dimensions WxDxH (mm)	
CF02C	25 Kg. 25 Kg. 25 Kg.	700x960 370 Lts.	0.75 Kw	560x360	1.0 BSP 125 Lts/Full	60	0.5'BSP 25 Kg/Hr	12 Kw	1x1 BSP 10000 Kcal/Hr	1120 x1450 x1750	
CF02D	50 Kg. 50 Kg. 50 Kg.	910x1130 735 Lts	0.5 Kw	560x410	0.5'BSP 50 Kg/Hr	60	0.5'BSP 25 Kg/Hr	12 Kw	1x1 BSP 20000 Kcal/Hr	1930x1110 x1200	
CF02E	100 Kg. 100 Kg.	1120x1500 1487 Lts	3.75 Kw	810x160	1.0'BSP 100 Kg/Hr	60	1.0'BSP 100 Kg/Hr	-	1x1 BSP 40000 Kcal/Hr	2520x1300 x1300	
CF02F	150 Kg. 150 Kg.	1120x2450 2412 Lts	7.5 Kw	810x460	1.0' BSP 150 Kg/Hr	100	1.0' BSP 150 Kg/Hr	-	1x1 BSP 60000 Kcal/Hr	3550x1114 x1350	
CF02G	200 Kg. 200 Kg.	1120x3000 2954 Lts.	7.5 kw	810x460 2 Nos	1.0' BSP 200 Kg/Hr	150	1.0' BSP 200 Kg/Hr	-	1x1 BSP 80000 Kcal/Hr	4330x1300 x1350	



Tumbler Dryer

FEATURES

- Superior Drying Capacity
- Consume Less Energy
- Easy To Operate
- Low Cost
- Stainless steel Inner Cylinder
- Painted outer Body.
- Digital temperature controller and display in °F or °C.
- Anti wrinkle safety tumble.
- Dual motor belt drive, all welded construction,
- No-song, No-sag perforated basket, safety main door switch, great energy server.

SPECIFICATIONS

Capacity Dry Wt. Per Charge	Basket Size Volume	Drive Motor Blower Motor	Main Door Opening	Heating			Overall Dimensions WxDxH
				Steam Connection Consumption	Electrical	Thermal Fluid Connection Consumption	
25 Kg. 25 Kg. 25 Kg.	850x950 650 Lts.	0.75 Kw 0.75 Kw	650	0.5 BSP 40 Kg/Hr	12 Kw	5x.5 BSP 20000 Kcal/Hr	1050 x1460 x1980
50 Kg. 50 Kg. 50 Kg.	1250x990 1214 Lts	1.5 Kw 1.5 Kw	800	0.5 BSP 80 Kg/Hr	24 Kw	1x1.5 BSP 40000 Kcal/Hr	1050 x1460 x1980
100 Kg. 100 Kg. 100 Kg.	1600x1200 2411 Lts.	2.25 Kw 1.5 Kw (2 Nos)	1000	1 BSP 150 Kg/Hr	-	1.5x1.5 BSP 80000 Kcal/Hr	1350 x1690 x2300
200 Kg. 200 Kg. 200 Kg.	2050x1450 4785 Lts.	6.50 Kw 5.5 Kw	1000	1.25 BSP 200-300 Kg/Hr	-	1.5x1.5 BSP 160000 Kcal/Hr	1750 x2190 x2750



Vaccum Iron Table

FEATURES

- Designed for garment industry, studios and alternationshops
- Flat top ironing table with optional swivel arm, buck for ironing of smaller parts (As per Requirement)

SPECIFICATIONS

Model	: Superlab
Top Size	: 1220 x 762 mm
Suction Motor	: 0.50 HP
Power	: 2 kW
Voltage	: 220 V
Dimension	: 1220x762x863 mm

Hydro Extractor

“Superlab” Hydro Extractor Specially designed for centrifuge of garments after washing/dyeing. Direct drive, high speed, self balancing, auto DC inject brake, auto timed.

Capacity Dry Weight Per Change	Basket Dia X Depth	Basket Speed	Drain	Drain	Dimensions (W X D X H)	Net Wt.	Shipping Wt.(App.) Shipping Size (W X D X H) Shipping Volume
12 KG	450 X 300	1000 RPM	0.75 KW	50 (2" BSP)	760 X 920 X 1000	210 KG	305 KG 980X1125X1350 1.5 M ³
15 KG	550 X 300	1000 RPM	2.20 KW	65 (2.5" BSP)	880X1030 X1100	320 KG	450 KG 1140X1210X1265 1.75 M ³
25 KG	700 X 300	1000 RPM	3.75 KW	75 (3" BSP)	1020 X 1170 X 1100	395 KG	520 KG 1200X1350X1270 2.05 M ³
50 KG	1000 X 300	750 RPM	7.50 KW	100 (4" BSP)	1370 X 1580 X 1210	820 KG	820 KG 1500X1950X1300 3.95 M ³



Cabinet Dyeing Machine



FEATURES

- Main dyeing vessel made of SS
- Carriers for loading of hanks with SS sticks for loading of hanks.
- An internal axial pump or an external pump for liquor circulation.
- An indirect heating system (with internal or external heat exchanger)
- An addition tank with injector pump
- Preparation tank
- An internal or external sampling device

SPECIFICATIONS

Capacity (Cotton)	Material of Construction Stainless Steel	Max. Temperature	Overall Dimensions	Volume	Motor capacity	Steam Consumption (Saturated)
(Kgs.)	(SS)	°C	(mm)LWH	(Liter's)	(HP)	Qty.Kg/Hr Pressure Kg/Cm ²
5	SS-304	95°C	675	280	1385	25 3
50	SS-304	95°C	1650	900	1980	160 3
100	SS-3304	95°C	1650	900	2840	300 3

Jigger Dyeing Machine

FEATURES

- Offered machine finds its best usage in bleach and Dyeing process of different textile fabric such as rayon, cotton, staples, synthetic etc
- Less maintenance
- Optimum performance
- Long service life

SPECIFICATIONS

- Available Width : 48" To 150" Roller Width
- Roll Center : 25", 30", 36", 42", 46"
- Capacity : 225 Kg., 350 Kg., 500 Kg., 750Kg., 1000 Kg. (250 Gsm)
- Temperature Controller
- Auto R/F System (Optional)
- S.S. Structure with M.S. Base Frame
- Inverter Drive
- Main Roll S.S. Claded
- Circulation System with 2.0 H.P. Motor & S.S. Vertical Pump



Package Dyeing Machine

FEATURES

- Cone Dyeing Machine / HTHP Package Yarn Dyeing Machines machine is used for dyeing sample of fabric and yarn at high temperature and high pressure. Our offered machines are reliable, durable and robust in construction, as we manufacture these using best in class raw material. We dye many substrates including textured and spun polyester and various blends of these fibers. The body of the machine is fabricated using high grade stainless steel in order to assure durability and resistance to corrosion.

SPECIFICATIONS

- Capacity from 1 kg to 1500 kg
- Very low liquor ratio from 1:3 to 1:5
- Loading up to 30% possible
- Savings of water, chemical, heat & electrical energy
- Coil type heat exchanger for efficient and fast heat transfer
- Design ensures complete drain of liquor
- Pneumatic cylinder lift door with Heavy Clamp locking system
- Hydraulic safety locking for door
- Large Saving of capital and operational cost
- Wo. temp up to 140 °C
- Wo. Pr. Up to 4 kg/cm²



Winch Dyeing Machine

FEATURES

- Low maintenance
- Rugged design
- Easy maintenance
- Low power consumption
- Fully Stainless Steel
- Side Glass For Water Level
- Out Let Valve Direct Steam Coil

SPECIFICATIONS

Capacity	Size	Motor Required
20 Kg	610 mm	1 H.P
125 Kg	1829 mm	2 H.P
150 Kg	2134 mm	2 H.P
200 Kg	2448 mm	3 H.P
250 Kg	3048 mm	5 H.P
300 Kg	3658 mm	5 H.P

VAT Dyeing Machine

FEATURES

- We are highly involved in providing a wide range of optimum quality Roller Type Hank Dyeing Machine.
- Material are using in Steel
- Application : For dyeing yarn
- Easy maintenance
- High operational fluency
- Energy efficient

SPECIFICATIONS

Material	: SS
Brand	: Superlab
Usage/Application	: Yard
Machine Type	: Semi-Automatic
Voltage	: 440V
Phase	: three Phase
I deal in	: New Only



Niddle Detector

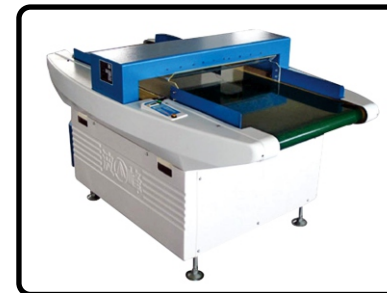
FEATURES

- Cycled, 9 pairs of sensor, excellent anti- disturbance performance.
- Based on LED bar displayed control panel.
- High accuracy detection location technology. LED indication.
- Level setup indication and real-time sensitivity display.
- Optional automatically restart.
- Reliability mechanical frame design, high stable during detection.
- Designed for universal AC power supply, switch power supply.

SPECIFICATIONS

- Detecation Method : Magnetic Induction
- Detecation Ability : 0.8mm Steel Ball
- Detecation Adjustment : 10 Step
- Detecation Width : 650mm
- Alarm Method : Buzzer, Lamp
- Belt Speed : 32m/min (50Hz), 40m/min (60Hz)
- Power Source : AC200-240V, 50-60Hz
- Related Output : Appr 140w
- Dimension : 1650mm(L) x 1050mm(W) x 900mm (H)
- Weight : Appr 220kg

Model	Detection Height	Detection Sensibility
ZD-630A 100mm	100mm	0.8mm steel to small scissors
ZD-630A 120mm	120mm	1.0mm steel to small scissors
ZD-630A 150mm	150mm	1.2-1.5mm steel to small scissors
ZD-630A 200mm	200mm	1.5-2.0mm steel to small scissors



Swatch Cutter

FEATURES

- An economical, equipment to the prepare beautiful , swatches , of the different sizes with maximum width .
- Of the 400 mm swatch cutter is a portable to the convenient equipment for the zigzag cutting of the patterns , apparel , dress, curtains upholstery , house , hold textiles .

SPECIFICATIONS

- Dimensions (Swatch Cutter 400 mm) : (LxWxH) (1270x1250x1440) in mm
- Application : Fabrics sample cutting
- Brand Name : Superlab
- Voltage/Power : Hand Operated
- Fabrics Type : All Type
- Range Of Cutting : 400 MM.
- Cutting Blade : ZIG- ZAG / Flat Blade
- Cutting Blade Hardness : HR-C63-65
- Blade : SS Material
- Weight : 40kg (Approx) .



Box Compression Teaster

FEATURES

- Box Compression (Motorized) for small cartons with Bright LED Digital Display. The unit comes complete with over travel protection, 'TARE' and 'P/H' (Peak Hold) facility.

SPECIFICATIONS

- Platform Size : 450 x 450 mm
- Maximum Load : 500 kg
- Type : Compression
- Least Cost : 100 gms
- Power consumption : 1 KW
- Motor : ¼ HP single phase
- Movement : Bottom Platform





Tide



Persil



SDC Detergent



SDC Multi Fiber DW



SDC Blue Wool



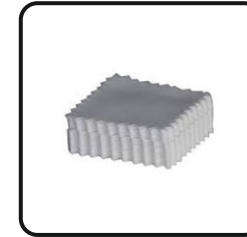
SDC Felt Pads



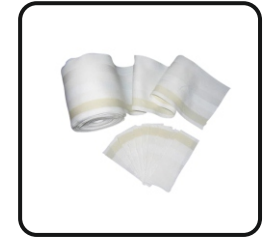
SDC Wool Abradent



Adjacent Cloth



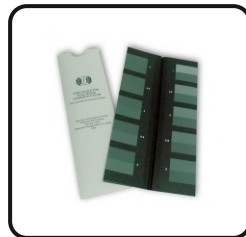
Crocking Cloth



AATCC Multi Fabric



SDC Grey Scale



AATCC Grey Scale



GSM Pad



GSM Blade



Magnifying Glass



Pick Glass



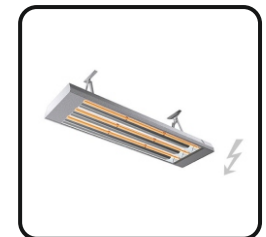
IR Thermometer



Thermometer



Hot Plate



IR Heater



Heater



Thickness Guage



Techo Meter



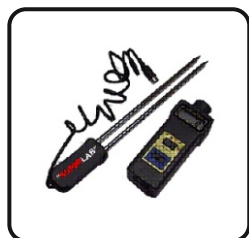
Lux Meter



TDS Meter (Pen Type)



Tex Marker



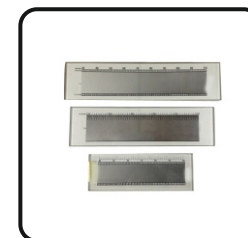
Moisture Meter



Moisture Meter



SS Ball



Densimeter



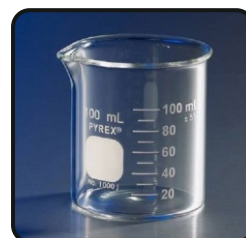
Tube Light



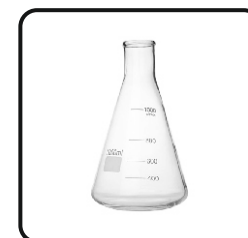
Hygrometer



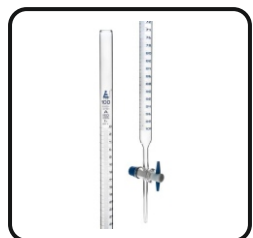
Pipette



Beaker



Glass Flask



Burette



Glass Test Tube



Glass Test Tube Stand



Dyes And Chemicals



Ph Paper

Consumables for Laboratory



Social Media :



Branch Offices :

Ludhiana | Panipat | Kolkata | Bhubneshwar | Bangalore
Tripur | Indore | Mumbai | Ahemadabad | Jaipur



Plot No 5, Opp Shubham Sai Service Centre,
Nanagli Sakrawati Industrial Area, Najafgarh,
New Delhi, Pin-110043 (INDIA)



+91-99101 64707,99111 64707



superlabindia@gmail.com



www.superlabindia.com